

ZON TABLE



H: 31" D: 47" W: 72"

Designer: Jay Payne

Top available in: Layered glass*, wood, steel*, stone/granite

Base available in: Silver metallic, cobalt, wood

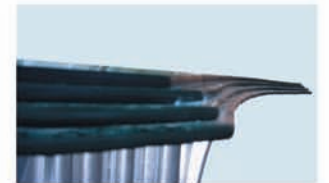
"Inspired by tropical tree roots, the beautifully contoured ZON table base has a remarkable resemblance to it's origin... the



tree. A molten, laminated glass top, heated to 2000 degrees and then gradually cooled for 56 hours (to prevent exploding) makes a perfect counterpoint to the sinuey base. Whether you choose the luminous metallic silver or cobalt anolin glaze, the ZON table is remarkably versatile at complimenting any style decor."

Jay Payne

* Shipping takes 8 weeks.



Zon Table Suggested Retail Price:

Zon Table with Layered Glass Top

Zon Table with Wood Top

Zon Table with Steel Top

Zon Table with Stone/Granite Top

